



# SUNSHINE POWER GENERATION CATALOG



**FUZHOU SUNSHINE MACHINERY CO.,LTD**

**Add:** No.6 Gulouyuan, Juyuanzhou Industrial Zone, Jinshan Development Area, Fuzhou, Fujian, China.

**Tel:** 0086-591-88204179

**Mobile:** 0086-13705041170 Mr.Ben

**Email:** sales@sunshinegenerator.com

sunshinemachinery@gmail.com

**Website:** www.sunshinegenerator.com

**MYANMAR BRANCH COMPANY AND WAREHOUSE**

**Add:**No.40,Thirimon Road,Thirimon Plaza,Mayangone Township,Yangon,Myanmar.

**Mobile:** 09250386767 , 09250828610

**Email:** sales@sunshinegenerator.com



Genset Assembly Line

Production facilities

Genset Testing Facilities

## Company Profile

FUZHOU SUNSHINE MACHINERY CO. LTD establish in 2003, who is one of the leading manufacturer and exporter of generator sets from 10kVA to 3000kVA and Lighting tower.

We aim to deliver the cleaner and reliable power to the world! All Sunshine's products are manufactured in accordance with ISO 9001, and the quality of our product is of utmost importance to us. Sunshine's range of products are the result of three factors put together; many years of experience, innovative technology and the selection of high quality components. Our products are widely used in the CNG stations, telecoms, factories, hotel, construction, mining, hospital and manufacturing companies.

Customer satisfaction is our key to success! Our team's initiative and skill, along with the flexibility of our production plant, nurture a culture of permanent innovation which ensures the uninterrupted power supply in your business.

We own our growth to the success of our dealers networks which represents a wealth of knowledge and experience, supporting Sunshine's products in the field. We are looking forward to cooperate and growing with old and new dealers."



# POWER SOLUTIONS

## Building

Building covers a wide range, including office buildings, skyscrapers, residences, hotels, restaurants, shopping malls, schools, etc. Non-stop power supply is needed to operate the computers, lightings, electric appliances, elevators in these places. Power generators usually act as standby power, standing by main power.



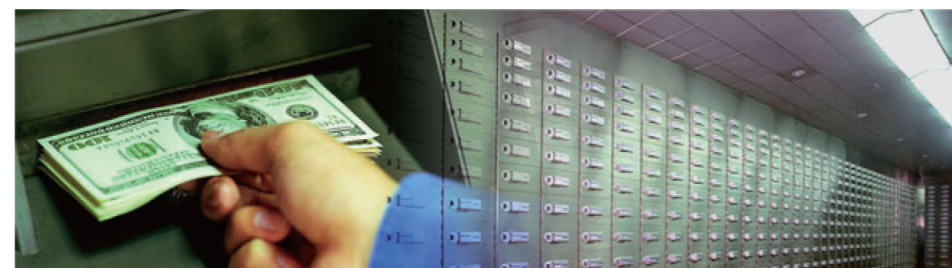
## Hospital

Hospitals have a more demanding power supply. The power for hospitals allows absolutely no interruption and must be provided in a super silent way. To meet the demanding requirements, the power generators must have excellent performance, also AMF and ATS are required.



## Bank

Banks own large numbers of advanced computers and other equipments, which can only be operated in a demanding room. The room environment has a strict requirement for the temperature, humidity, cleanness, noise, static electricity, electromagnetic interference.



## Telecom

Power generators are mainly applied for telecoms stations in telecoms industry. Usually, generator sets 800KW are needed for provincial station, and generator sets 300KW to 400KW are needed for municipal station, as standby power.

For town or county station, 120KW and below are needed, usually as prime power.



## Oil fields

We provide a complete set of power solutions for oil fields, supplying power for oil exploration, gas process, oil production facility construction, operation and maintenance. Usually power generators are used as prime power source for daily life, engineering in oil fields.



## Mining

Sunshine power solution for mining ensures high efficiency of mining exploration and process. Usually power generators are used as prime power source for daily life, engineering in mining site.



## Power plant

Sunshine provides a comprehensive power solution for power plants, ensuring continuous power supply in case the power plant stops delivering power.



## Outdoor prime power

Generator sets used as outdoor prime power usually have to deal with tough environments.



# CUMMINS SERIES



50 Hz

POWERED BY CUMMINS 3P,4W,400/230V. 1500r.p.m



Genset Model	Standby Power		Prime Power		Engine Specification				Fuel Consumption (L/H)100 % Load	Soundproof Type Genset		Open Type Genset	
	KVA	KW	KVA	KW	Model	Cylinder	Governor	Displacement (L)		Dimension (L*W*H)mm	Weight (KG)	Dimension (L*W*H)mm	Weight (KG)
SC27.5	27.5	22	25	20	4B3.9G2	4L	Electronic	3.9	7.5	2450*1080*1865	1350	1725*950*1500	830
SC44	44	35	40	32	4BT3.9G2	4L	Electronic	3.9	9.3	2450*1080*1865	1400	1725*950*1500	950
SC66	66	53	60	48	4BTA3.9G2	4L	Electronic	3.9	12.9	2670*1080*1865	1500	1850*950*1500	1000
SC80	80	64	72.5	58	4BTA3.9-G11	4L	Electronic	3.9	17.6	2670*1080*1865	1500	1850*950*1500	1000
SC110	110	88	100	80	6BT5.9G2	6L	Electronic	5.9	22.0	2900*1080*2000	1780	2140*950*1530	1200
SC125	125	100	113	90	6BTA5.9-G2	6L	Electronic	5.9	27.0	3200*1080*2000	1780	2310*950*1530	1200
SC138	138	110	125	100	6BTAA5.9-G2	6L	Electronic	5.9	30.0	3200*1080*2000	1780	2310*950*1530	1240
SC150	150	120	138	110	6BTA5.9G2	6L	Electronic	5.9	30.0	3200*1080*2000	1780	2310*950*1530	1240
SC165	165	132	150	120	6BTA5.9-G12	6L	Electronic	5.9	34.0	3200*1080*2000	1890	2400*950*1530	1400
SC175	176	140.8	160	128	6CTA8.3G2	6L	Electronic	8.3	38.0	3500*1080*2120	2130	2400*950*1530	1650
SC200	200	160	180	144	6CTA8.3G2	6L	Electronic	8.3	42.0	3500*1080*2120	2150	2450*950*1690	1690
SC220	220	176	200	160	6CTAA8.3G2	6L	Electronic	8.3	45.0	3500*1080*2120	2520	2540*950*1750	1810
SC275	275	220	250	200	6LTAA8.9-G3	6L	Electronic	8.9	54.0	3700*1090*2080	2980	2580*1020*1670	2030
SC313	313	250	275	220	NTA855G1A	6L	Electronic	14.0	61.0	4350*1400*2260	4020	3050*1200*1760	3260
SC350	350	280	313	250	NTA855G1B	6L	Electronic	14.0	71.4	4350*1400*2260	4020	3050*1200*1760	3340
SC388	388	310	350	280	NTA855G4	6L	Electronic	14.0	75.3	4350*1400*2260	4060	3050*1200*1760	3355
SC413	413	330	375	300	NTAA855G7	6L	Electronic	14.0	86.0	4350*1500*2260	4870	3250*1230*1800	3485
SC450	450	360	400	320	NTAA855G7A	6L	Electronic	14.0	89.2	4350*1500*2260	4870	3250*1230*1800	3485
SC500	500	400	450	360	KTA19G3	6L	Electronic	19.0	97.0	4650*1600*2260	5270	3380*1370*2050	4166
SC550	550	440	500	400	QSZ13-G3	6L	ECU	13.0	101.0	4350*1600*2260	4060	3030*1200*1740	3356
SC550	550	440	500	400	KTA19G4	6L	Electronic	19.0	107.0	4650*1600*2260	5270	3380*1370*2050	4166
SC650	650	520	600	480	KTA19G8	6L	Electronic	19.0	139.0	4650*1600*2260	5270	3380*1370*2050	4166
SC688	688	550	625	500	KTAA19G6A	6L	Electronic	19.0	127.8	4950*2000*2514	5930	3680*1670*2190	4813
SC800	800	640	727	580	KT38-GA	12V	Electronic	38.0	157.0	20GP Container	10250	4410*1720*2170	7190
SC825	825	660	750	600	KTA38G2	12V	Electronic	38.0	167.0	20GP Container	10250	4410*1720*2170	7190
SC880	880	704	800	640	KTA38G2B	12V	Electronic	38.0	172.0	20GP Container	10250	4410*1720*2170	7199
SC1000	1000	800	900	720	KTA38G2A	12V	Electronic	38.0	191.0	20GP Container	12110	4410*1720*2170	7359
SC1100	1100	880	1000	800	KTA38G5	12V	Electronic	38.0	209.0	20GP Container	12160	4300*2080*2190	7777
SC1250	1250	1000	1135	908	KTA38G9	12V	Electronic	38.0	256.0	20GP Container	12110	4400*2080*2190	8156
SC1375	1375	1100	1250	1000	KTA50G3	16V	Electronic	50.0	274.0	40HQ Container	20800	5000*2080*2290	9261
SC1675	1675	1340	1500	1200	KTA50GS8	16V	Electronic	50.0	309.0	40HQ Container	21400	5170*2120*2360	10762
SC2250	2250	1800	2000	1600	QSK60G4	16V	ECU	60.2	394.0	40HQ Container	23000	5957*2250*2612	13500



60 Hz

POWERED BY CUMMINS 3P,4W,440/254V or 220/127V. 1800r.p.m



Genset Model	Standby Power		Prime Power		Engine Specification				Fuel Consumption (L/H)100 % Load	Soundproof Type Genset		Open Type Genset	
	KVA	KW	KVA	KW	Model	Cylinder	Governor	Displacement (L)		Dimension (L*W*H)mm	Weight (KG)	Dimension (L*W*H)mm	Weight (KG)
SC35	35	28	31	25	4B3.9-G2	4L	Electronic	3.9	8.6	2450*1080*1865	1350	1725*950*1500	830
SC55	55	44	50	40	4BT3.9-G2	4L	Electronic	3.9	9.3	2450*1080*1865	1350	1725*950*1500	830
SC75	75	60	67.5	54	4BTA3.9-G2	4L	Electronic	3.9	15.9	2670*1080*1865	1460	1850*950*1500	950
SC92.5	92.5	74	85	68	4BTA3.9-G11	4L	Electronic	3.9	20.1	2670*1080*1865	1500	1850*950*1500	1000
SC125	125	100	110	88	6BT5.9-G2	6L	Electronic	5.9	28.5	2900*1080*2000	1780	2140*950*1530	1200
SC143	143	114	130	104	6BTA5.9-G2	6L	Electronic	5.9	27.0	2900*1080*2000	1780	2140*950*1530	1200
SC163	163	130	148	118	6BTAA5.9-G2	6L	Electronic	5.9	30.0	3200*1080*2000	1780	2310*950*1530	1200
SC175	175	140	160	128	6BTA5.9-G12	6L	Electronic	5.9	38.0	3200*1080*2000	1780	2310*950*1530	1200
SC200	200	160	180	144	6CTA8.3-G2	6L	Electronic	8.3	44.0	3500*1080*2120	2150	2400*950*1530	1690
SC220	220	176	200	160	6CTA8.3-G2	6L	Electronic	8.3	44.0	3500*1080*2120	2150	2400*950*1530	1690
SC250	250	200	228	182	6CTAA8.3-G2	6L	Electronic	8.3	49.0	3500*1080*2120	2520	2400*950*1530	1810
SC275	275	220	250	200	6LTAA8.9-G2	6L	Electronic	8.3	53.0	3700*1090*2080	2980	2580*1020*1670	2030
SC300	300	240	275	220	6LTAA8.9-G3	6L	Electronic	8.3	57.0	3700*1090*2080	2980	2580*1020*1670	2030
SC344	344	275	313	250	NTA855-G1	6L	Electronic	14.0	76.5	4350*1400*2260	4020	3050*1200*1760	3340
SC385	385	308	350	280	NTA855G1B	6L	Electronic	14.0	80.5	4350*1400*2260	4020	3050*1200*1760	3340
SC440	440	352	400	320	NTA855G3	6L	Electronic	14.0	87.0	4350*1400*2260	4020	3050*1200*1760	3340
SC500	500	400	450	360	KTA19G2	6L	Electronic	18.9	98.0	4650*1600*2260	5270	3380*1370*2050	4166
SC500	500	400	450	360	QSZ13-G2	6L	ECU	13.0	89.0	4350*1600*2260	4020	3030*1200*1740	3356
SC530	530	424	500	400	QSZ13-G3	6L	ECU	13.0	104.1	4350*1600*2260	4060	3030*1200*1740	3356
SC550	550	440	500	400	QSZ13-G5	6L	ECU	13.0	107.0	4350*1600*2260	4060	3030*1200*1740	3356
SC578	578	462	525	420	KTA19G3	6L	Electronic	18.9	111.0	4650*1600*2260	5270	3380*1370*2050	4166
SC625	625	500	563	450	KTA19G4	6L	Electronic	18.9	120.0	4650*1600*2260	5270	3380*1370*2050	4166
SC670	670	536	600	480	KTAA19G5	6L	Electronic	18.9	134.0	4950*2000*2514	5930	3670*1680*2190	4650
SC750	750	600	680	544	KTAA19G6A	6L	Electronic	18.9	140.0	4950*2000*2514	5930	3680*1670*2190	4813
SC850	850	680	775	620	KT38G	12V	Electronic	37.8	154.0	20GP Container	10250	4410*1720*2170	7190
SC1000	1000	800	925	740	KTA38G2	12V	Electronic	37.8	204.0	20GP Container	10250	4410*1720*2170	7190
SC1160	1160	928	1044	835	KTA38G2A	12V	Electronic	37.8	225.0	20GP Container	10250	4410*1720*2170	7190
SC1250	1250	1000	1138	910	KTA38G4	12V	Electronic	37.8	245.0	20GP Container	12160	4300*2080*2190	7777
SC1375	1375	1100	1250	1000	KTA38-G9	12V	Electronic	37.8	274.0	20GP Container	12160	4400*2080*2190	8156
SC1513	1513	1210	1375	1100	KTA50G3	16V	Electronic	50.3	282.0	40HQ Container	21400	4960*2200*2620	10371
SC1650	1650	1320	1500	1200	KTA50G9	16V	Electronic	50.3	330.0	40HQ Container	21400	5300*2150*2550	10762
SC1720	1720	1376	1563	1250	KTA50G9	16V	Electronic	50.3	330.0	40HQ Container	21400	5300*2150*2550	10762
SC1875	1875	1500	N.A.	N.A.	KTA50G9	16V	Electronic	50.3	330.0	40HQ Container	21400	5300*2150*2550	10762

# PERKINS SERIES



**50 Hz** POWERED BY PERKINS 3P,4W,400/230V. 1500r.p.m



Genset Model	Standby Power		Prime Power		Engine Specification				Fuel Consumption (L/H)100%Load	Soundproof Type Genset		Open Type Genset	
	KVA	KW	KVA	KW	Model	Cylinder	Governor	Displacement (L)		Dimension (L*W*H)mm	Weight (KG)	Dimension (L*W*H)mm	Weight (KG)
SP10	10	8	9	7.2	403D-11G	3L	Mechanical	1.131	2.6	1480*750*1270	390	1900*730*1130	578
SP13.8	13.8	11.04	12.5	10	403D-15G	3L	Mechanical	1.496	3.7	1480*750*1300	469	1900*730*1130	649
SP16	16	12.8	15	12	403A-15G2	3L	Mechanical	1.496	4.1	1480*750*1300	469	1900*730*1130	649
SP22	22	17.6	20	16	404D-22G	4L	Mechanical	2.216	5.3	1630*750*1350	553	2250*730*1130	743
SP27.5	27.5	22.0	25	20	404D-22TG	4L	Mechanical	2.216	7.1	1630*750*1350	553	2250*730*1130	743
SP33	33	26.4	30	24	1103A-33G	3L	Mechanical	3.3	7.1	1780*750*1480	788	2250*850*1280	990
SP50	50	40	45	36	1103A-33TG1	3L	Mechanical	3.3	10.7	1850*750*1480	908	2450*1080*1865	1358
SP66	66	52.8	60	48	1103A-33TG2	3L	Mechanical	4.4	13.9	1950*750*1480	933	2450*1080*1865	1358
SP72	72	57.6	65	52	1104A-44TG1	4L	Electronic	4.4	14.8	2220*750*1530	1045	2670*1080*1865	1450
SP88	88	70.4	80	64	1104A-44TG2	4L	Electronic	4.4	18.7	2220*750*1530	1054	2670*1080*1865	1455
SP110	110	88	100	80	1104C-44TAG2	4L	Electronic	4.4	22.6	2220*750*1530	1054	2670*1080*1865	1458
SP138	138	110	125	100	1106A-70TG1	6L	Electronic	7.01	29.9	2800*790*1650	1649	3500*1080*2120	2358
SP150	150	120	135	108	1106A-70TG1	6L	Electronic	7.01	29.9	2800*790*1650	1649	3500*1080*2120	2358
SP165	165	132	150	120	1106A-70TAG2	6L	Electronic	7.01	45.8	2800*790*1650	1649	3500*1080*2120	2358
SP200	200	160	180	144	1106A-70TAG3	6L	Mechanical	7.01	41.6	2800*790*1650	1649	3500*1080*2120	2358
SP220	220	176	200	160	1106A-70TAG4	6L	Electronic	7.01	45.8	2800*790*1650	1749	3500*1080*2120	2458
SP220	220	176	200	160	1506A-E88TAG1	6L	Electronic	8.8	44.6	2920*930*1810	2084	3700*1280*2120	2880
SP250	250	200	225	180	1506A-E88TAG2	6L	Electronic	8.8	48.6	2920*930*1810	2084	3700*1280*2120	2938
SP275	275	220	250	200	1506A-E88TAG3	6L	Electronic	8.8	55.5	2920*930*1810	2084	3700*1280*2120	2938
SP300	300	240	275	220	1506A-E88TAG4	6L	Electronic	8.8	60.2	3230*1150*1810	2502	4000*1400*2204	3508
SP330	330	264	300	240	1506A-E88TAG5	6L	Electronic	8.8	64.9	3230*1150*1810	2502	4000*1400*2204	3508
SP400	400	320	350	280	2206C-E13TAG2	6L	ECU	12.5	75.0	3500*1150*2050	3178	4350*1400*2260	4080
SP450	450	360	400	320	2206C-E13TAG3	6L	ECU	12.5	85.0	3500*1150*2050	3306	4350*1400*2260	4280
SP500	500	400	450	360	2506C-E15TAG1	6L	ECU	15.2	95.0	3830*1190*2050	3637	4650*1400*2260	4930
SP550	550	440	500	400	2506C-E15TAG2	6L	ECU	15.2	100.0	3830*1190*2050	3637	4650*1400*2260	4930
SP660	660	528	600	480	2806C-E18TAG1A	6L	ECU	15.2	129.0	3750*1550*2080	4382	4750*1760*2204	5880
SP715	715	572	650	520	2806A-E18TAG2	6L	ECU	15.2	132.0	3750*1550*2080	4537	4750*1760*2204	5980
SP800	800	640	725	580	4006-23TAG2A	6L	Electronic	22.921	159.0	4320*1760*2200	6127	20GP Container	10280
SP880	880	704	800	640	4006-23TAG3A	6L	Electronic	22.921	175.0	4320*1760*2200	6130	20GP Container	10280
SP1000	1000	800	900	720	4008TAG1A	8L	Electronic	30.561	195.0	4700*2090*2280	8650	40HQ Container	18650
SP1100	1100	880	1000	800	4008TAG2A	8L	Electronic	30.561	220.0	4700*2090*2280	8650	40HQ Container	18650
SP1375	1375	1100	1250	1000	4012-46TWG2A	12V	Electronic	45.842	262.0	4850*2050*2500	8929	40HQ Container	18928
SP1500	1500	1200	1350	1080	4012-46TWG3A	12V	Electronic	45.842	283.0	4850*2050*2500	8987	40HQ Container	19458
SP1650	1650	1320	1500	1200	4012-46TAG2A	12V	Electronic	45.842	316.0	5000*2230*2410	9440	40HQ Container	19488
SP1875	1875	1500	1705	1364	4012-46TAG3A	12V	Electronic	45.842	370.0	5090*2230*2530	10127	40HQ Container	20128
SP2030	2030	1624	1845	1476	4016TAG1A	16V	Electronic	61.123	383.0	6000*2200*2560	12229	40HQ Container	21228
SP2250	2250	1800	2050	1640	4016TAG2A	16V	Electronic	61.123	434.0	6000*2200*2560	12513	40HQ Container	22518
SP2500	2500	2000	2250	1800	4016-81TRG3	16V	Electronic	61.123	473.0	6080*2230*2700	13281	40HQ Container	23288



**60 Hz** POWERED BY PERKINS 3P,4W,440/254V or 220/127V. 1800r.p.m



Genset Model	Standby Power		Prime Power		Engine Specification				Fuel Consumption (L/H)100%Load	Soundproof Type Genset		Open Type Genset	
	KVA	KW	KVA	KW	Model	Cylinder	Governor	Displacement (L)		Dimension (L*W*H)mm	Weight (KG)	Dimension (L*W*H)mm	Weight (KG)
SP11	11	8.8	10	8	403D-11G	3L	Mechanical	1.131	3.0	1480*750*1270	390	1900*730*1130	578
SP16	16	12.8	15	12	403D-15G	3L	Mechanical	1.496	4.3	1480*750*1270	469	1900*730*1130	648
SP25	25	20	23	18.4	404D-22G	4L	Mechanical	2.216	6.2	1630*750*1350	553	2250*730*1130	748
SP34	34	27	31	25	404D-22TG	4L	Mechanical	2.216	8.3	1630*750*1350	553	2250*730*1130	748
SP39	39	31	35	28	404D-22TAG	4L	Mechanical	2.216	7.8	1630*750*1350	553	2250*730*1130	748
SP39	39	31	35	28	1103A-33G	3L	Mechanical	3.3	7.8	1780*750*1480	788	2250*850*1280	990
SP58	58	46	53	42	1103A-33TG1	3L	Mechanical	3.3	12.9	1850*750*1480	908	2450*1080*1865	1358
SP75	75	60	68	54	1103A-33TG2	3L	Mechanical	3.3	16.6	1850*750*1480	908	2450*1080*1865	1358
SP100	100	80	90	72	1104C-44TAG1	4L	Electronic	4.4	22.0	2220*750*1530	1054	2670*1080*1865	1458
SP125	125	100	113	90	1104C-44TG2	4L	Electronic	4.4	26.9	2220*750*1530	1054	2670*1080*1865	1458
SP150	150	120	138	110	1106A-70TAG2	6L	Electronic	7.01	45.8	2800*790*1650	1699	3500*1080*2120	2388
SP185	185	148	168	135	1106A-70TAG2	6L	Electronic	7.01	45.8	2800*790*1650	1699	3500*1080*2120	2388
SP210	210	168	190	152	1106A-70TAG3	6L	Mechanical	7.01	41.6	2800*790*1650	1749	3500*1080*2120	2388
SP235	235	188	215	172	1506A-E88TAG1	6L	Electronic	8.8	44.6	2920*930*1810	2084	3700*1080*2120	2880
SP270	270	216	245	196	1506A-E88TAG1	6L	Electronic	8.8	44.6	2920*930*1810	2084	3700*1080*2120	2880
SP300	300	240	275	220	1506A-E88TAG2	6L	Electronic	8.8	44.6	2920*930*1810	2084	3700*1080*2120	2880
SP325	325	260	295	236	1506A-E88TAG2	6L	Electronic	8.8	44.6	2920*930*1810	2084	3700*1080*2120	2880
SP344	344	275	313	250	1506A-E88TAG3	6L	Electronic	8.8	55.5	3230*1150*1810	2502	4000*1400*2204	3508
SP385	385	308	350	280	1506A-E88TAG4	6L	Electronic	8.8	60.2	3230*1150*1810	2502	4000*1400*2204	3508
SP440	440	352	400	320	2206C-E13TAG2	6L	ECU	12.5	84.0	3500*1150*2050	3178	4350*1400*2260	4080
SP500	500	400	450	360	2206C-E13TAG3	6L	ECU	12.5	84.0	3500*1150*2050	3306	4350*1400*2260	4280
SP440	440	352	400	320	2206D-E13TAG2	6L	ECU	12.5	87.0	3500*1150*2050	3306	4350*1400*2260	4280
SP500	500	400	450	360	2206D-E13TAG3	6L	ECU	12.5	87.0	3500*1150*2050	3306	4350*1400*2260	4280
SP440	440	352	400	320	2208A-E13TAG5	6L	Electronic	12.5	83.0	3500*1150*2050	3306	4350*1400*2260	4280
SP485	485	388	440	352	2208A-E13TAG6	6L	Electronic	12.5	83.0	3500*1150*2050	3306	4350*1400*2260	4280
SP560	560	448	510	408	2506D-E15TAG1	6L	ECU	15.2	113.0	3830*1190*2050	3637	4650*1400*2260	4930
SP560	560	448	510	408	2506C-E15TAG1	6L	ECU	15.2	100.0	3830*1190*2050	3637	4650*1400*2260	4930
SP633	633	506	575	460	2506C-E15TAG3	6L	ECU	15.2	121.0	3830*1190*2050	3637	4650*1400*2260	4930
SP700	700	560	638	510	2506C-E15TAG4	6L	ECU	15.2	135.0	3830*1190*2050	3637	4650*1400*2260	4930
SP575	575	460	525	420	2506A-E15TAG3	6L	Electronic	15.2	101.0	3830*1190*2050	3637	4650*1400*2260	4930
SP633	633	506	575	460	2506A-E15TAG4	6L	Electronic	15.2	115.0	3830*1190*2050	3637	4650*1400*2260	4930
SP688	688	550	625	500	2806A-E18TAG1A	6L	Electronic	18.1	127.0	3750*1550*2080	4382	4750*1760*2260	5880
SP770	770	616	700	560	2806A-E18TAG3	6L	Electronic	18.1	144.0	3750*1550*2080	4382	4750*1760*2260	5880
SP770	770	616	700	560	2806C-E18TAG3	6L	ECU	18.1	145.0	3750*1550*2080	4537	4750*1760*2260	5980
SP825	825	660	750	600	4006-23TAG2A	6L	Electronic	22.921	177.0	4320*1760*2200	6127	20GP Container	10280
SP920	920	736	838	670	4006-23TAG3A	6L	Electronic	22.921	200.0	4320*1760*2200	6130	20GP Container	10280
SP950	950	760	865	692	4008-TAG1	8L	Electronic	30.561	211.0	4320*1760*2200	8500	20GP Container	10280
SP1100	1100	880	1000	800	4008-TAG2	8L	Electronic	30.561	221.0	4320*1760*2200	8500	20GP Container	10280
SP1375	1375	1100	1250	1000	4012-46TWG2A	12V	Electronic	45.842	260.0	4850*2050*2500	8929	40HQ Container	18928
SP1500	1500	1200	1364	1091.2	4012-46TWG3A	12V	Electronic	45.842	291.0	4850*2050*2500	8987	40HQ Container	18988
SP1650	1650	1320	1500	1200	4012-46TAG2A	12V	Electronic	45.842	319				

# DEUTZ SERIES



50 Hz

POWERED BY DEUTZ 3P,4W,400/230V. 1500r.p.m



Genset Model	Standby Power		Prime Power		Engine Specification				Fuel Consumption (L/H)100% Load	Soundproof Type Genset		Open Type Genset	
	KVA	KW	KVA	KW	Model	Cylinder	Governor	Displacement (L)		Dimension (L*W*H)mm	Weight (KG)	Dimension (L*W*H)mm	Weight (KG)
SD65	65	52	60	48	BF4M2012	4L	Mechanical	4.04	16.9	2670*1080*1865	1650	1870*980*1500	970
SD80	80	63	73	58	BF4M2012C	4L	Mechanical	4.04	19.3	2670*1080*1865	1850	1960*980*1500	1040
SD93	93	75	85	68	BF4M1013EC	4L	Mechanical	4.76	25.8	2900*1080*2000	1950	2140*980*1700	1180
SD110	110	88	100	80	BF4M1013EC	4L	Mechanical	4.76	25.8	2900*1080*2000	1950	2140*980*1700	1180
SD140	140	112	125	100	BF4M1013FC	4L	Electronic	4.76	32.2	2900*1080*2000	2100	2190*980*1700	1220
SD165	165	132	150	120	BF6M1013EC	6L	Mechanical	7.15	28.5	3500*1080*2120	2500	2500*980*1700	1590
SD200	200	160	182	146	BF6M1013FCG2	6L	Electronic	7.15	45.9	3750*1280*1915	2900	2640*1150*1790	1710
SD220	220	176	200	160	BF6M1013FCG3	6L	Electronic	7.15	50.8	3750*1280*1915	2950	2640*1150*1790	1760
SD250	250	200	225	180	BF6M1015-LAGA	6V	Electronic/M	11.91	53.0	3600*1400*2150	2980	2500*1250*2150	2193
SD275	275	220	250	200	BF6M1015C-LAG1A	6V	Electronic/M	11.91	58.0	3800*1600*2150	3508	2630*1410*2150	2228
SD313	313	250	288	230	BF6M1015C-LAG2A	6V	Electronic/M	11.91	66.0	3800*1600*2150	3508	2630*1410*2150	2423
SD350	350	280	313	250	BF6M1015C-LAG3A	6V	Electronic/M	11.91	73.0	3800*1600*2150	3508	2630*1410*2150	2503
SD385	385	308	350	280	BF6M1015C-LAG4	6V	Electronic/M	11.91	82.0	3800*1600*2150	3508	2630*1410*2150	2641
SD413	413	330	375	300	BF6M1015CP-LAG	6V	Electronic/M	11.91	89.0	4000*1700*2450	5000	2830*1410*2150	2679
SD475	475	380	438	350	BF8M1015C-LAG1A	8V	Electronic/M	15.87	102.0	4350*1750*2450	5300	3100*1560*2150	3263
SD500	500	400	450	360	BF8M1015C-LAG2	8V	Electronic/M	15.87	106.0	4350*1750*2450	5300	3100*1560*2150	3263
SD525	525	420	475	380	BF8M1015CP-LAG1A	8V	Electronic/M	15.87	113.0	4350*1750*2450	5300	3100*1560*2150	3263
SD550	550	440	500	400	BF8M1015CP-LAG2	8V	Electronic/M	15.87	118.0	4350*1750*2450	5300	3100*1560*2150	3263
SD563	563	450	513	410	BF8M1015CP-LAG3	8V	Electronic/M	15.87	121.0	4350*1750*2450	5300	3100*1560*2150	3263
SD588	588	470	538	430	BF8M1015CP-LAG4	8V	Electronic/M	15.87	127.0	4350*1750*2450	5300	3100*1560*2150	3363
SD625	625	500	563	450	BF8M1015CP-LAG5	8V	Electronic/M	15.87	133.0	4350*1750*2450	5300	3100*1560*2150	3511



60 Hz

POWERED BY DEUTZ 3P,4W,440/254V or 220/127V. 1800r.p.m



Genset Model	Standby Power		Prime Power		Engine Specification				Fuel Consumption (L/H)100% Load	Soundproof Type Genset		Open Type Genset	
	KVA	KW	KVA	KW	Model	Cylinder	Governor	Displacement (L)		Dimension (L*W*H)mm	Weight (KG)	Dimension (L*W*H)mm	Weight (KG)
SD72.5	73	58	65	52	BF4M2012	4L	Mechanical	4.04	18.9	2670*1080*1865	1650	1870*980*1500	970
SD88	88	70	80	64	BF4M2012C	4L	Mechanical	4.04	22.7	2670*1080*1865	1850	1960*980*1500	1040
SD105	105	84	95	76	BF4M1013EC	4L	Mechanical	4.76	28.0	2900*1080*2000	1950	2140*980*1700	1180
SD113	113	90	105	84	BF4M1013EC	4L	Mechanical	4.76	28.0	2900*1080*2000	1950	2140*980*1700	1180
SD125	125	100	115	92	BF4M1013FC	4L	Electronic	4.76	36.5	2900*1080*2000	2100	2190*980*1700	1220
SD150	150	120	138	110	BF6M1013EC	6L	Mechanical	7.15	41.8	3500*1080*2120	2500	2500*980*1700	1590
SD175	175	140	160	128	BF6M1013EC	6L	Mechanical	7.15	41.8	3500*1080*2120	2500	2500*980*1700	1590
SD206	206	165	188	150	BF6M1013FCG2	6L	Electronic	7.15	52.7	3750*1280*1915	2900	2640*1150*1790	1710
SD200	220	176	200	160	BF6M1013FCG2	6L	Electronic	7.15	52.7	3750*1280*1915	2900	2640*1150*1790	1710
SD250	250	200	228	182	BF6M1013FCG3	6L	Electronic	7.15	60.2	3750*1280*1915	2950	2640*1150*1790	1760
SD275	275	220	250	200	BF6M1015-LAGB	6V	Electronic/M	11.91	58.0	3600*1400*2150	2980	2500*1250*2150	2193
SD300	300	240	275	220	BF6M1015C-LAG1B	6V	Electronic/M	11.91	64.0	3800*1600*2150	3508	2630*1410*2150	2228
SD330	330	264	300	240	BF6M1015C-LAG2B	6V	Electronic/M	11.91	70.0	3800*1600*2150	3508	2730*1410*2150	2423
SD375	375	300	338	270	BF6M1015C-LAG3B	6V	Electronic/M	11.91	79.0	3800*1600*2150	3508	2730*1410*2150	2503
SD500	500	400	450	360	BF8M1015C-LAG1B	8V	Electronic/M	15.87	106.0	4350*1750*2450	5300	3100*1560*2150	3263
SD525	525	420	475	380	BF8M1015CP-LAG1B	8V	Electronic/M	15.87	112.0	4350*1750*2450	5300	3100*1560*2150	3263

# RICARDO SERIES



**50 Hz** POWERED BY RICARDO 3P,4W,400/230V. 1500r.p.m



Genset Model	Standby Power		Prime Power		Engine Specification				Fuel Consumption (L/H)100% Load	Soundproof Type Genset		Open Type Genset	
	KVA	KW	KVA	KW	Model	Cylinder	Governor	Displacement (L)		Dimension (L*W*H)mm	Weight (KG)	Dimension (L*W*H)mm	Weight (KG)
GFS-20KW	27.5	22	25	20	K4100D	4L	Mechanical	3.76	7.9	2250*870*1200	950	1700*630*1000	760
GFS-24KW	33	26.4	30	24	K4100D	4L	Mechanical	3.76	7.9	2250*870*1200	950	1700*630*1000	760
GFS-30KW	41.25	33	37.5	30	K4100ZD	4L	Mechanical	3.76	9.9	2250*920*1280	980	1760*800*1100	950
GFS-40KW	55	44	50	40	K4100ZD	4L	Mechanical	3.76	9.9	2250*920*1280	980	1760*800*1100	950
GFS-50KW	68.75	55	62.5	50	R4105ZD	4L	Mechanical	4.33	14.8	2250*920*1280	1180	1850*800*1100	1050
GFS-60KW	82.5	66	75	60	4105AZLD	4L	Mechanical	4.33	15.5	2450*1000*1330	1250	1980*800*1200	1060
GFS-75KW	102	82	94	75	R6105ZD	6L	Mechanical	6.5	19.2	2700*1000*1350	1362	2350*800*1270	1300
GFS-100KW	137.5	110	125	100	R6105AZLD	6L	Mechanical	6.5	20.5	2850*1000*1350	1472	2470*800*1270	1450
GFS-120KW	165	132	150	120	6105IAZLD	6L	Mechanical	7.01	30.7	2950*1000*1350	1620	2470*800*1270	1550
GFS-150KW	206	165	188	150	R6110ZLD	6L	Mechanical	7.72	35	2950*1100*1530	1991	2470*800*1270	1700
GFS-200KW	275	220	250	200	TH6126ZD	6L	Mechanical	8.9	39.6	3350*1180*1600	2600	2800*1100*1800	2300



**60 Hz** POWERED BY RICARDO 3P,4W,440/254V or 220/127V. 1800r.p.m



Genset Model	Standby Power		Prime Power		Engine Specification				Fuel Consumption (L/H)100% Load	Soundproof Type Genset		Open Type Genset	
	KVA	KW	KVA	KW	Model	Cylinder	Governor	Displacement (L)		Dimension (L*W*H)mm	Weight (KG)	Dimension (L*W*H)mm	Weight (KG)
GFS-20KW	27.5	22	25	20	K4100D	4L	Mechanical	3.76	7.9	2250*870*1200	950	1700*630*1000	760
GFS-24KW	33	26.4	30	24	K4100D	4L	Mechanical	3.76	7.9	2250*870*1200	950	1700*630*1000	760
GFS-30KW	41.25	33	37.5	30	K4100ZD	4L	Mechanical	3.76	9.9	2250*920*1280	980	1760*800*1100	950
GFS-40KW	55	44	50	40	K4100ZD	4L	Mechanical	3.76	9.9	2250*920*1280	980	1760*800*1100	950
GFS-50KW	68	55	63	50	R4105ZD	4L	Mechanical	4.33	14.8	2250*920*1280	1180	1850*800*1100	1050
GFS-60KW	82	66	75	60	4105AZLD	4L	Mechanical	4.33	15.5	2450*1000*1330	1250	1980*800*1200	1060
GFS-75KW	103	82	94	75	R6105ZD	6L	Mechanical	6.5	19.2	2700*1000*1350	1362	2350*800*1270	1300
GFS-100KW	138	110	125	100	R6105AZLD	6L	Mechanical	6.5	20.5	2850*1000*1350	1472	2470*800*1270	1450
GFS-120KW	165	132	150	120	6105IAZLD	6L	Mechanical	7.01	30.7	2950*1000*1350	1620	2470*800*1270	1550
GFS-150KW	206	165	188	150	R6110ZLD	6L	Mechanical	7.72	35	2950*1100*1530	1991	2470*800*1270	1700
GFS-200KW	275	220	250	200	TH6126ZD	6L	Mechanical	8.9	39.6	3350*1180*1600	2600	2800*1100*1800	2300

# DOOSAN SERIES



50 Hz

POWERED BY DOOSAN 3P,4W,400/230V. 1500r.p.m



Genset Model	Standby Power		Prime Power		Engine Specification				Fuel Consumption (L/H)100% Load	Soundproof Type Genset		Open Type Genset	
	KVA	KW	KVA	KW	Model	Cylinder	Governor	Displacement (L)		Dimension (L*W*H)mm	Weight (KG)	Dimension (L*W*H)mm	Weight (KG)
SDO165	165	132	150	120	DP086TA	6L	Electronic	8.00	33.7	3600x1080x2150	2060	2600x1120x1680	1650
SDO220	220	176	200	160	DP086LA	6L	Electronic	8.00	48.7	3600x1080x2150	2180	2600x1120x1680	1760
SDO250	250	200	225	180	DP086LA	6L	Electronic	8.00	48.7	3600x1080x2150	2200	2600x1120x1680	1875
SDO275	275	220	250	200	P126TI	6L	Electronic	11.00	58.1	4000x1400x2260	4000	2900x1160x1750	2185
SDO300	300	240	270	216	P126TI	6L	Electronic	11.00	58.1	4000x1400x2260	4000	2900x1160x1750	2400
SDO330	330	264	300	240	P126TI-II	6L	Electronic	11.00	63.1	4000x1400x2260	4000	2900x1160x1750	2400
SDO385	385	308	350	280	P158LE-1	8V	Electronic	14.61	78.7	4350x1600x2260	4500	2900x1400x1950	3120
SDO415	415	332	375	300	DP158LC	8V	Electronic	14.61	99.6	4350x1600x2260	4500	2900x1400x1950	3120
SDO440	440	352	400	320	DP158LC	8V	Electronic	14.61	99.6	4350x1600x2260	4500	2900x1400x1950	3250
SDO500	500	400	450	360	DP158LC	8V	Electronic	14.61	99.6	4350x1600x2260	4500	2900x1400x1950	3250
SDO550	550	440	500	400	DP158LD	8V	Electronic	14.61	115.1	4350x1600x2260	4500	2900x1400x1950	3380
SDO575	575	460	525	420	DP158LD	8V	Electronic	14.61	115.1	4350x1600x2260	4500	2900x1400x1950	3380
SDO605	605	484	550	440	DP180LA	10V	Electronic	18.27	123.6	4550x1800x2450	4800	3205x1640x2150	3570
SDO625	625	500	565	452	DP180LA	10V	Electronic	18.27	123.6	4550x1800x2450	4800	3205x1640x2150	3570
SDO688	688	550	625	500	DP180LB	10V	Electronic	18.27	136.4	4550x1800x2450	4800	3205x1640x2150	3570
SDO738	738	590	670	536	DP222LB	12V	Electronic	21.92	147.1	4950x1800x2515	5900	3445x1640x2180	4000
SDO813	813	650	738	590	DP222LC	12V	Electronic	21.92	161.0	4950x1800x2515	5900	3205x1640x2150	4350



60 Hz

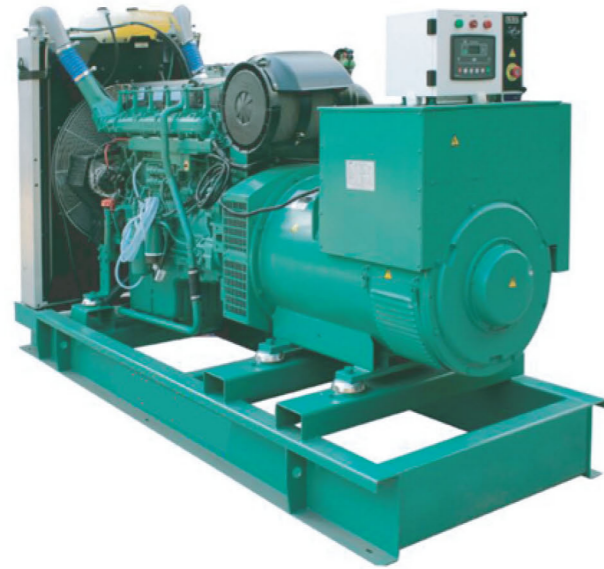
POWERED BY DOOSAN 3P,4W,440/254V or 220/127V. 1800r.p.m



Genset Model	Standby Power		Prime Power		Engine Specification				Fuel Consumption (L/H)100% Load	Soundproof Type Genset		Open Type Genset	
	KVA	KW	KVA	KW	Model	Cylinder	Governor	Displacement (L)		Dimension (L*W*H)mm	Weight (KG)	Dimension (L*W*H)mm	Weight (KG)
SDO305	305	244	275	220	P126TI	6L	Electronic	11.00	70.3	4100x1400x2204	3240	2980x1180x1600	2441
SDO330	330	264	300	240	P126TI	6L	Electronic	11.00	70.3	4100x1400x2204	3456	2980x1180x1600	2656
SDO375	375	300	340	272	P126TI-II	6L	Electronic	11.00	73.8	4100x1400x2204	3496	2980x1180x1600	2696
SDO440	440	352	400	320	P158LE-1	8V	Electronic	14.61	91.3	4350x1700x2260	4024	3050x1430x1950	3124
SDO500	500	400	450	360	DP158LC	8V	Electronic	14.61	111.5	4350x1600x2260	4500	2900x1400x1950	3120
SDO550	550	440	500	400	DP158LC	8V	Electronic	14.61	111.5	4350x1600x2260	4500	2900x1400x1950	3120
SDO605	605	484	550	440	DP158LD	8V	Electronic	14.61	124.3	4350x1600x2260	4500	2900x1400x1950	3380
SDO625	625	500	563	450	DP158LD	8V	Electronic	14.61	124.3	4350x1600x2260	4500	2900x1400x1950	3380
SDO688	688	550	625	500	DP180LA	10V	Electronic	18.27	140.5	4550x1800x2450	4800	3205x1640x2150	3570
SDO740	740	592	675	540	DP180LB	10V	Electronic	18.27	150.7	4550x1800x2450	4800	3205x1640x2150	3570
SDO825	825	660	750	600	DP222LA	12V	Electronic	21.93	161.7	4950x1800x2515	5055	3480x1430x1950	4235
SDO853	853	682	775	620	DP222LB	12V	Electronic	21.93	172.7	4950x1800x2515	5055	3480x1430x1950	4235
SDO900	900	720	825	660	DP222LC	12V	Electronic	21.93	183.2	4950x1800x2515	5567	3680x1430x1950	4697



# FAWDE SERIES



50 Hz

POWERED BY FAWDE 3P,4W,400/230V. 1500r.p.m



Genset Model	Standby Power		Prime Power		Engine Specification				Fuel Consumption (L/H)100% Load	Soundproof Type Genset		Open Type Genset	
	KVA	KW	KVA	KW	Model	Cylinder	Governor	Displacement (L)		Dimension (L*W*H)mm	Weight (KG)	Dimension (L*W*H)mm	Weight (KG)
GFS-10KW	13.75	11	12.5	10	4DW81-23D	4L	Mechanical	2.16	3.5	1700*850*1170	750	1450*650*1050	600
GFS-12KW	16.5	13.2	15	12	4DW81-23D	4L	Mechanical	2.16	3.5	1700*850*1170	750	1450*650*1050	600
GFS-16KW	22	17.6	20	16	4DW91-29D	4L	Mechanical	2.16	4.5	1900*850*1170	1000	1450*650*1050	700
GFS-20KW	27.5	22	25	20	4DW92-35D	4L	Mechanical	2.54	4.5	2000*850*1200	1050	1550*780*1150	750
GFS-24KW	33	26.4	30	24	4DW92-39D	4L	Electronic	2.54	7.4	2000*850*1200	1050	1550*780*1150	750
GFS-25KW	35	28	31	25	4DX21-45D	4L	Mechanical	3.86	6.5	2280*950*1260	1050	1800*850*1250	800
GFS-30KW	42	33	38	30	4DX21-53D	4L	Electronic	3.86	7.8	2280*950*1260	1100	1800*850*1250	850
GFS-40KW	55	44	50	40	4DX22-65D	4L	Electronic	3.86	9	2280*950*1260	1050	1800*850*1250	800
GFS-50KW	70	55	63	50	4DX23-78D	4L	Electronic	3.86	15.5	2280*950*1260	1100	1800*850*1250	900
GFS-75KW	103	82	94	75	CA4F2-12D	4L	Electronic	4.752	17.9	2700*1050*1650	1300	2200*900*1350	1100
GFS-80KW	110	88	100	80	6DF2D-14D	6L	Mechanical	6.56	20.2	2800*1100*1600	1400	2520*1100*1330	1200
GFS-110KW	150	120	138	110	CA6DF2-17D	6L	Electronic	6.56	27.9	3200*1100*1700	2000	2720*1100*1530	1800
GFS-120KW	165	132	150	120	CA6DF2-19D	6L	Electronic	7.13	35	3200*1100*1700	2000	2720*1100*1530	1800
GFS-160KW	220	176	200	160	CA6DL1-24D	6L	Electronic	7.7	42.9	3200*1100*1700	2100	2720*1100*1530	1900
GFS-180KW	248	198	225	180	CA6DL2-27D	6L	Electronic	8.57	50	3400*1200*1900	2500	2850*1200*1630	2200
GFS-200KW	275	220	250	200	CA6DL2-30D	6L	Electronic	8.57	55.5	3400*1200*1900	2600	2850*1200*1630	2300
GFS-250KW	344	275	313	250	CA6DM2J-39D	6L	Electronic	11.05	70	3600*1400*2050	2900	2900*1150*1650	2400
GFS-280KW	385	308	350	280	CA6DM2J-41D	6L	Electronic	11.05	73	3600*1400*2050	3000	2900*1150*1650	2500
GFS-300KW	413	330	375	300	CA6DN1J-45D	6L	Electronic	12.53	80	3600*1400*2050	3200	2900*1150*1650	2700

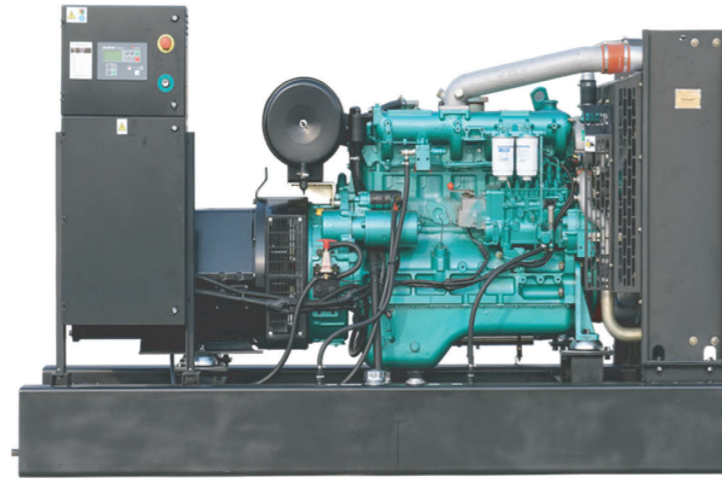
60 Hz

POWERED BY FAWDE 3P,4W,440/254V or 220/127V.1800r.p.m



Genset Model	Standby Power		Prime Power		Engine Specification				Fuel Consumption (L/H)100% Load	Soundproof Type Genset		Open Type Genset	
	KVA	KW	KVA	KW	Model	Cylinder	Governor	Displacement (L)		Dimension (L*W*H)mm	Weight (KG)	Dimension (L*W*H)mm	Weight (KG)
GFS-12KW	16.5	13.2	15	12	4DW81-28D	4L	Mechanical	2.27	6	1700*850*1170	750	1450*650*1050	600
GFS-16KW	22	17.6	20	16	4DW81-28D	4L	Mechanical	2.27	6	1700*850*1170	750	1450*650*1050	600
GFS-24KW	33	26	30	24	4DW91-38D	4L	Mechanical	2.54	8.4	2000*850*1200	1050	1550*780*1150	750
GFS-30KW	42	33	38	30	4DX21-53D	4L	Electronic	3.86	11.2	2280*950*1260	1100	1800*850*1250	850
GFS-38KW	52	42	48	38	4DX22-60D	4L	Electronic	3.86	12.4	2280*950*1260	1100	1800*850*1250	850
GFS-50KW	70	55	63	50	4DX23-82D	4L	Electronic	3.86	15.5	2280*950*1260	1100	1800*850*1250	900
GFS-68KW	94	75	85	68	4110/125Z-11D	4L	Electronic	4.752	21	2700*1050*1650	1300	2200*900*1350	1100
GFS-84KW	115	93	105	84	CA4DF2-14D	4L	Electronic	4.752	25	2700*1050*1650	1300	2200*900*1350	1100
GFS-100KW	138	110	125	100	CA6DF2D-16D	6L	Electronic	6.56	27.9	3200*1100*1700	2000	2720*1100*1530	1800
GFS-110KW	150	120	138	110	CA6DF2-18D	6L	Electronic	7.13	33	3200*1100*1700	2000	2720*1100*1530	1800
GFS-130KW	176	143	160	130	CA6DF-21D	6L	Electronic	7.13	35	3200*1100*1700	2000	2720*1100*1530	1800
GFS-160KW	220	176	200	160	CA6DL1-27D	6L	Electronic	7.7	42.9	3200*1100*1700	2100	2720*1100*1530	1900
GFS-200KW	275	220	250	200	CA6DL2-32D	6L	Electronic	8.57	55.5	3400*1200*1900	2600	2850*1200*1630	2300
GFS-250KW	344	275	313	250	CA6DM2J-39D	6L	Electronic	11.05	70	3600*1400*2050	2900	2900*1150*1650	2400
GFS-280KW	385	308	350	280	CA6DM2J-42D	6L	Electronic	11.05	73	3600*1400*2050	3000	2900*1150*1650	2500
GFS-300KW	413	330	375	300	CA6DN1J-46D	6L	Electronic	12.53	80	3600*1400*2050	3200	2900*1150*1650	2700

# YUCHAI SERIES



50 Hz POWERED BY YUCHAI 3P,4W,400/230V. 1500r.p.m



Genset Model	Standby Power		Prime Power		Engine Specification				Fuel Consumption (L/H)100% Load	Soundproof Type Genset		Open Type Genset	
	KVA	KW	KVA	KW	Model	Cylinder	Governor	Displacement (L)		Dimension (L*W*H)mm	Weight (KG)	Dimension (L*W*H)mm	Weight (KG)
SYC47	47	38	43	34	YC4D60-D21	4L	Mechanical	4.214	9.4	2450*1000*1200	800	1950*800*1350	600
SYC68	68	55	62.5	50	YC4D85Z-D20	4L	Mechanical	4.32	12.7	2550*1000*1200	1200	1950*800*1350	930
SYC88	88	70	80	64	YC4A100Z-D20	4L	Mechanical	4.84	18.8	2550*1000*1200	1300	1930*740*1210	1000
SYC110	110	88	100	80	YC6B135Z-D20	6L	Mechanical	6.871	21.4	2850*1080*1500	1700	2200*800*1200	1300
SYC125	125	99	113	90	YC6B155L-D21	6L	Mechanical	6.871	25	2850*1080*1500	1700	2200*800*1200	1300
SYC138	138	110	125	100	YC6B180L-D20	6L	Mechanical	6.871	26.8	2950*1000*1500	1800	2300*800*1200	1400
SYC165	165	132	150	120	YC6B205L-D20	6L	Mechanical	6.871	30.3	3100*1100*1550	1980	2500*1000*1400	1700
SYC193	193	154	175	140	YC6A230L-D20	6L	Mechanical	7.252	35	3150*1100*1550	2100	2650*1000*1400	1900
SYC206	206	165	188	150	YC6A245L-D21	6L	Electronic	7.8	37.9	3250*1200*1750	2300	2700*1100*1400	2000
SYC275	275	220	250	200	YC6MK350L-D20	6L	Mechanical	9.839	54.5	3950*1220*1900	2400	3000*1100*1700	2100
SYC344	344	275	313	250	YC6MK420L-D20	6L	Electronic	10.338	63	3800*1300*1700	3100	3000*1100*1700	2900
SYC413	413	330	375	300	YC6MJ480L-D20	6L	Electronic	11.73	73	4250*1220*2050	3200	3450*1200*1850	3000
SYC480	480	385	438	350	YC6K570-D30	6L	ECU	16.35	92	4450*1220*2050	3400	3650*1200*1850	3100
SYC550	550	440	500	400	YC6T660L-D20	6L	Electronic	16.35	101.2	4850*1420*2150	3700	3650*1400*2050	3300
SYC688	688	550	625	500	YC6TD840L-D20	6L	ECU	19.598	136	5800*1920*2520	10220	4400*1500*2150	5000
SYC825	825	660	750	600	YC6C1020L-D20	6L	Electronic	39.584	156	5800*1920*2520	10220	4400*1500*2150	5000
SYC963	963	770	875	700	YC6C1170L-D20	6L	Electronic	39.584	170	5850*2320*2350	11000	4900*1500*2250	6000
SYC1100	1100	880	1000	800	YC6C1320L-D20	6L	Electronic	39.584	181	5850*2320*2350	11000	4900*1500*2250	6000

# SDEC SERIES



50 Hz POWERED BY SDEC 50HZ,3P,4W,400/230V. 1500r.p.m



Genset Model	Standby Power		Prime Power		Engine Specification				Fuel Consumption (L/H)100% Load	Soundproof Type Genset		Open Type Genset	
	KVA	KW	KVA	KW	Model	Cylinder	Governor	Displacement (L)		Dimension (L*W*H)mm	Weight (KG)	Dimension (L*W*H)mm	Weight (KG)
SDE70	70	55	63	50	SC4H95D2	4L	Mechanical	4.3	15.0	2670*1080*1865	1400	1850*950*1500	1200
SDE88	88	70	80	64	SC4H115D2	4L	Mechanical	4.3	20.2	2900*1080*2000	1500	2140*950*1530	1300
SDE125	125	100	113	90	SC4H160D2	4L	Electronic	4.3	25.0	2900*1080*2000	1500	2140*950*1530	1300
SDE138	138	110	125	100	SC4H180D2	4L	Electronic	4.3	28.6	3200*1080*2000	1650	2200*950*1530	1400
SDE185	185	148	169	135	SC7H230D2	6L	Electronic	6.44	36.5	3500*1080*2120	1800	2450*950*1690	1500
SDE206	206	165	188	150	SC7H250D2	6L	Electronic	6.44	39.9	3500*1080*2120	1900	2540*950*1750	1700
SDE250	250	200	225	180	SC9D310D2	6L	Electronic	8.82	50.6	3600*1090*2080	2200	2550*1020*1670	1900
SDE275	275	220	250	200	SC9D340D2	6L	Electronic	8.82	54.1	3600*1090*2080	2200	2550*1020*1670	1900
SDE344	344	275	313	250	SC13G420D2	6L	Electronic	12.88	67.5	4350*1500*2220	3900	3030*1400*1900	2900
SDE413	413	330	375	300	SC15G500D2	6L	Electronic	14.16	81.2	4350*1500*2220	4100	3030*1400*1900	3044
SDE500	500	400	450	360	SC25G610D2	12V	Electronic	25.8	100.4	4650*1800*2520	5300	3630*1720*2250	4078
SDE550	550	440	500	400	SC25G690D2	12V	Electronic	25.8	113.1	4650*1800*2520	5300	3630*1720*2250	4078
SDE620	620	496	563	450	SC27G755D2	12V	Electronic	26.6	122.8	4950*2000*2520	5800	3630*1720*2250	4228
SDE688	688	550	625	500	SC27G830D2	12V	Electronic	26.6	141.0	4950*2000*2520	5800	3630*1720*2250	4228
SDE756	756	606	688	550	SC27G900D2	12V	Electronic	26.6	148.8	5806*2267*2554	9500	4440*1750*2430	6800
SDE825	825	660	750	600	SC33W990D2	6L	Electronic	32.8	174.9	20GP Container	10000	4360*1620*2160	6820
SDE1000	1000	800	900	720	SC33W1150D2	6L	Electronic	32.8	189.5	20GP Container	10250	4800*1900*2700	7359

## Control Panel- ComAp AMF20

### Main Features:

- ▲ Automatic mains failure
- ▲ Engine control, Generator protection
- ▲ Built in alarms and warnings
- ▲ Remote Start operation available
- ▲ Daily / weekly / monthly exerciser
- ▲ Weekly operation schedule programs
- ▲ Fuel pump control
- ▲ ECU control and monitoring via J1940 CANBUS
- ▲ Mains simulation
- ▲ Block heater control
- ▲ Field adjustable parameters
- ▲ Free MS-Windows Remote monitoring
- ▲ LED displays
- ▲ Configurable analogue inputs
- ▲ I/O expansion capability



## Option: Control Panel- SmartGen 6120CAN

### Main Features:

- ▲ Automatic mains failure
- ▲ Engine control, Generator protection
- ▲ Built in alarms and warnings
- ▲ Remote Start operation available
- ▲ Daily / weekly / monthly exerciser
- ▲ Weekly operation schedule programs
- ▲ Fuel pump control
- ▲ ECU control and monitoring via J1940 CANBUS
- ▲ Mains simulation
- ▲ Block heater control
- ▲ Field adjustable parameters
- ▲ Free MS-Windows Remote monitoring
- ▲ LED displays
- ▲ Configurable analogue inputs
- ▲ I/O expansion capability



## Option: Control Panel- DSE7320

### Main Features:

- ▲ The module is used to monitor a mains supply and starts and stops a standby generating set
- ▲ Micro-processor based design
- ▲ Automatic control of mains and generator contactors
- ▲ Monitors engine performance and AC power output
- ▲ LED alarm indication
- ▲ Front panel configuration of timers and alarm trip points
- ▲ Easy push button control
- ▲ Stop/reset-manual-test-auto-mute alarm-start



## Control Panel Function

### Protection Circuit

- ▲ WARNING
- ▲ Battery charge failure
- ▲ Low battery voltage
- ▲ SHUT DOWNS
- ▲ Fail to start
- ▲ Emergency stop
- ▲ Low oil pressure
- ▲ High engine temperature
- ▲ Over /Under speed
- ▲ Under/over generator frequency
- ▲ Failed to reach loading voltage
- ▲ ELECTRICAL TRIP
- ▲ Generator over current

### Instruments

- ▲ ENGINE
- ▲ Engine speed
- ▲ Oil pressure
- ▲ Coolant temperature
- ▲ Run time
- ▲ Battery volts
- ▲ GENERATOR
- ▲ Voltage (L-N)
- ▲ Current (L1-L2-L3)
- ▲ Frequency
- ▲ MAINS
- ▲ Voltage (L-L, L-N)

## Parallel Generators and Synchronization:

### Main Features:

- ▲ Sunshine Intelligent Digital Automatic Parallel Connection System adopts the PLC (programmable logic controller) of the DSE8610 Intelligent Parallel Generating Set made by Deep Sea Electronics plc (DSE) as the logic control device to control the generating sets and the synchroswitching-in and parallel connection of the low-voltage switches of the output GCB (Generator Circuit Breaker).
- ▲ It is capable of automatically controlling the startup & close-down, parallel and separating brakes of the diesel engine through internal control program and corresponding external control signal and according to the program-set control logic automatically.
- ▲ It can also actualize the power distribution to multiple sets and the synchronous parallel connection inspection. It combines the functions of load distribution, synchronous control, set control into one, having complete functions of sets control, monitoring and protection.



## ATS Auto Transfer Switch Panels:

### Main Features:

- ▲ ATS control panel is the ideal choice in cases where you have to control a power generator that is connected to the Mains in a standby configuration.
- ▲ ATS control panel is always waiting for a failure of the power utility. An ATS control panel automatically manages the connection assignment of the LOAD to MAINS or GENERATOR
- ▲ ATS control panel includes an automatic battery charger and a set of electronic circuit boards complete with power relays that interface with the engine Auto Start module.
- ▲ ATS controller is conveniently tasked with driving the contactors. Despite the fact that the power configuration is the same for all panels, the dimensions and weight of an ATS control panel depends on the nominal power of the system.

